

# *Ault in Bloom*

A Celebration of Roses, Flowers, and Gardens

*Ault Park Pavilion, Ault Park,  
5090 Observatory Ave, Cincinnati  
OH 45208*

Sunday, September 24, 2023

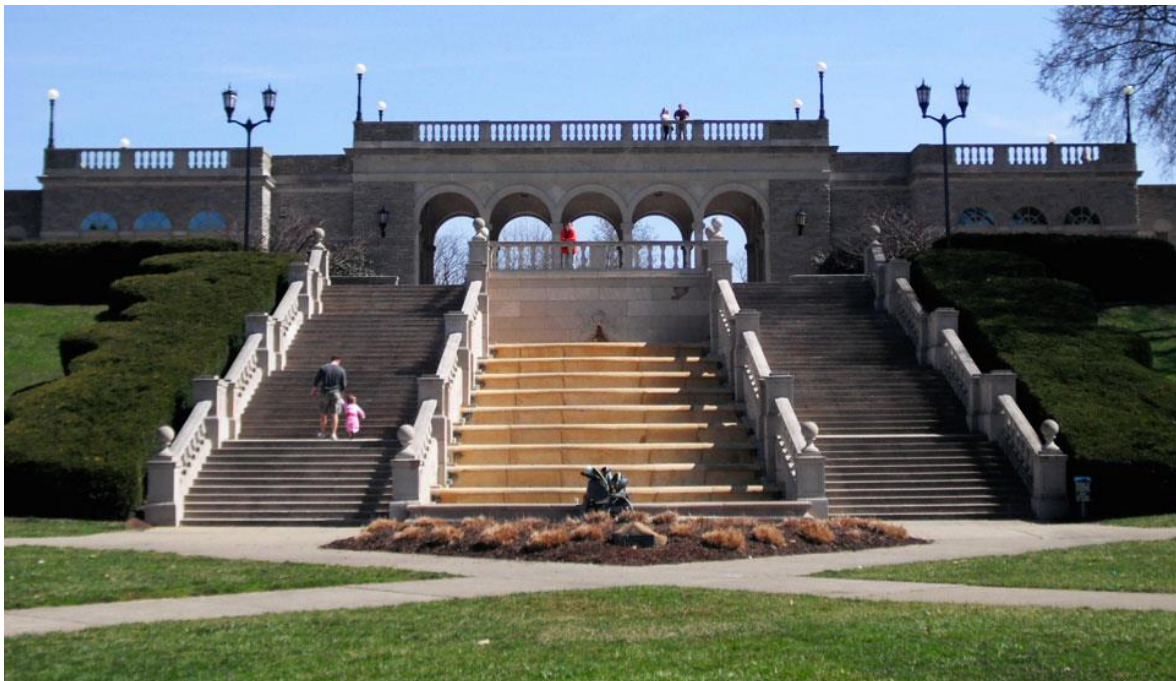
*This exhibition is generously provided and sponsored by  
The Greater Cincinnati Rose Association and Cincinnati Parks*

All the entries will be judged according to the rules in the show schedule.

## **Judging Rules**

**Please fill out an entry tag for each specimen entered.**

For map directions & a form to reserve a box lunch, please see the website.  
[www.rosesgcra.org](http://www.rosesgcra.org)



**Directions to Ault Park Pavilion, Ault Park,  
5090 Observatory Ave, Cincinnati  
OH 45208**

You are encouraged to use Google, Apple or Waze Apps or visit the website for a link to navigate to the above location. These Apps usually provide current traffic & accident information, providing alternatives when needed.

**From North of Cincinnati**

From I71 S to Red Bank Exit in Columbia Township. Take Exit 9 from I71 S.

Continue on Red Bank Exit. Take Red Bank Rd, US-50 W/Columbia Pkway & Heekin Ave to Ault Park Dr in Cincinnati.

**From South of Cincinnati**

From 175 N to Cincinnati. Take exit 72 from 1275 E.

Continue on US-52 W/Kellog Ave/Ohio River Scenic Byway. Take Eastern Ave to Ault Park Dr.

**From West side of Cincinnati**

Take US-27 S to OH-126 E to Ault Park Dr. Take OH-562 E to Ridge Ave in Cincinnati. Exit from OH-562E. Continue to Ridge Ave. Take Marburg Ave and Observatory Ave to Ault Park Dr.

## Division I

### ARS Horticulture Show Rules

The GCRA invites all amateur rose growers to compete under the following rules.

1. This is an “open show”. No entry restrictions apply.
2. Roses must be grown in an **outdoor garden** by the exhibitor.
3. **Modern Rose** and previous issues, as amended by the ARS Magazine, is the authority for classification. The **ARS Rose Registry**, with supplement and the **Handbook for Selecting Roses** may also be used. The 2022 **Combined Rose List** also identifies Official ARS exhibition names. ARS color classes and rules apply.
4. **All entries must be received from 7:00 AM until 11AM**, including large roses, miniature and miniflora.
5. Use of official AMERICAN EXHIBITION NAME is required. In general, the AEN will be, to the extent possible, the name under which the rose is available or otherwise generally known in the United States, not the name assigned based on the first use in international commerce as was previously the case.
6. Misnamed, mislabeled or unlabeled roses are disqualified.
7. Exhibitor name must be written on the upper and lower portion of the entry tag but not visible to the judges prior to judging. Self-stick labels are acceptable.
8. A properly tagged entry, found out of the proper place, shall be restored to the correct location and the class re-judged if necessary.
9. Entries may be penalized for stem on stem (except OGR, species and shrubs), penalized for not disbudded in classes in which side buds are not permitted, and an entry may be disqualified for a foreign substance if it is evident that the substance has been applied to enhance the bloom, such as green paint or leaf oil.
10. All roses are to be entered by cultivar name, in alphabetical order within the specimen class if indicated within the specific class. Exhibitors may make one entry per cultivar in alphabetical classes. All classes are to be judged alphabetically unless specifically noted. Multiple blue ribbons may be awarded in any class.
11. ARS entry cards must be used and will be supplied. (ARS Miniature tags should be used in those classes if available). The exhibitor’s name and class number must be included as indicated on the tag.
12. Rose variety name(s) must appear on the entry tag. No identifying material may show on the tag when it is closed, under penalty of disqualification; however, clerks are permitted to remove or cover the exhibitor’s name if it is discovered before the entry is judged.
13. No entry may win more than one award, except for the **Special Merit Award**. ARS Certificates will only be awarded to first place blue winners.
14. Containers are supplied by the sponsors; all entries must be in individual containers unless otherwise stated in the program and dependent upon availability.

15. Wedges, if used, may be of any suitable material of choice, but should not protrude above the lip of the container and can be penalized by the judges if distracting.
16. Decisions of the judges are final and may not be challenged. Exhibits will be judged based on the conditions at the time of judging. Only official judges and support team are allowed in the area during judging.
17. Each entry must contain the specified number of correctly named blooms or be disqualified. Hybrid Teas must be exhibited one bloom per stem unless otherwise noted in the program. Stem on stem and side buds are now considered a source of penalization and not a disqualification. Climbing Hybrid Teas must be entered as Hybrid Teas.

**ARS point scoring for judging Hybrid Tea specimens:**

<b>FORM</b> (shape and configuration)	25 points
<b>COLOR</b> (quality and trueness)	20 points
<b>SUBSTANCE</b>	15 points
<b>SIZE</b> (in relation to variety)	10 points
<b>BALANCE &amp; PROPORTION</b>	10 points
<b>STEM &amp; FOLIAGE</b>	20 points

Classes may be established, changed or deleted without notice by the Show Chairperson in order to preserve the integrity of the show.

ARS Certificates will be awarded where applicable. **Special Merit Award** for outstanding entry will be selected from winning specimens.

**SHOW COMMITTEE**

**Chairman:** Karen Freeman                      **Information & Education**  
**Schedule:** Jerry & Susan Dolph & Chris Brogan                      **Clerks:** Dr. Sheela Kamath  
**Horticultural Judges:** See below.                      **Publicity:** Karen Freeman  
**Signage & Classification cards + alphabets:** Chris Brogan  
**Identification & Placement:** Chris Brogan  
**Tabulation:** Ann Schlinkert & Laura Delaney  
**Ribbons & Certificates:** Karen Freeman                      **Supplies:** Chris Brogan  
**Set up & Staging:** Chris Brogan & Scott Reese plus volunteers

**Hospitality:** Lunch will be provided for all exhibitors, volunteers & Judges.

**Show Judges**

Horticultural Judges are accredited by the American Rose Society. They generously volunteer their time and incur personal expenses to perpetuate high standards in rose culture and education. They apply years of experience and training to select the very best entries.

The GCRA sincerely thanks our judges for their service and assistance in making the show a success.

**Horticultural JUDGES**

Jerry Dolph	Cincinnati, Ohio
Susan Dolph	Cincinnati, Ohio
Howard Carmen	Louisville KY and
Paula Williams	Louisville KY

**Photo JUDGE**

Horticultural Judges

**Arrangement JUDGE**

Casey	Cincinnati
-------	------------

**All Specimens** must be entered by **11 AM**, Judging starts at **11:15 AM**  
Dismantling the show will take place at the show chairpersons' discretion.

# Division I

## HYBRID TEA, HT CLIMBING SPORTS AND GRANDIFLORA

**Class 1: ARS One Exhibition Stage Hybrid Teas, Grandifloras and HT Climbing Sports.**  
One bloom per stem, only one of each cultivar, disbudded and alphabetical. Eligible for Queen (Gold), King (Silver) and Princess (Bronze) ARS Horticultural certificate.

**Class 2: Hybrid Teas, Grandiflora Open Bloom.**  
Eligible for Best Open Bloom (ARS) certificate.

**Class 3: Hybrid Tea or Grandiflora Spray** – One spray, two or more blooms, side buds permitted, alphabetical. (ARS Certificate)

## FLORIBUNDAS

**Class 4: ARS Floribundas.** Any Floribunda, one stem / one bloom, disbudded,.  
Eligible for Best Floribunda (ARS Certificate).

**Class 5: ARS Floribunda Spray** – Any Floribunda Spray, one stem/ two or more blooms, side buds permitted. Eligible for Best Floribunda Spray (ARS Certificate).

## SHRUB ROSES

**Class 6. Classic Shrubs** – Hybrid Musk, Hybrid Rugosa, Hybrid Moyesii and Kordesii only.  
ARS Certificate

**Class 7: Modern Shrubs** – Classified by ARS in the shrub’s “S” group, including Knockouts & David Austin “English” roses. (ARS Certificate)

## OLD GARDEN ROSES

**Class 8: Dowager Queen** – “OGR” in the ARS Handbook for selecting roses or Modern Roses Book, introduced before 1867. ARS Certificate

**Class 9: Victorian Rose** – “OGR” in the ARS Handbook for Selecting Roses or Modern Roses, introduced in 1867 or later. ARS Certificate

## ARS CLIMBER

**Class 10: ARS Climber** – Any climbing rose or rambler, one lateral stem, not a climbing sport of HT, GF, or F. Single bloom or spray. ARS Certificate

## CHALLENGE CLASS

**Class 11: Bucket of Blooms** –A bouquet of 6 but not more than 12 (6-12) of your left-over large, flowered roses, any classification except miniature or miniflora, in a container furnished by the exhibitor. Container must be of appropriate size and may be of any type. GCRA AWARD ONLY

## MINIATURE ROSE

**Class 12: Miniature Rose** – one bloom, one stem, disbudded, alphabetical. Eligible for ARS Miniature Queen & King Certificate.

**Class 13: Miniature Spray** - One spray, two or more blooms, side buds permitted, alphabetical. (ARS Certificate)

## MINIFLORA ROSE

**Class 14: Miniflora Rose** – one bloom, one stem, disbudded, alphabetical. Eligible for ARS Miniflora Queen & King Certificate.

**Class 15: Miniflora Spray** - One spray, two or more blooms, side buds permitted, alphabetical. (ARS Certificate)

## ROSE IN A BOWL (ARS Certificates)

**Class 16a:** Single large rose flower only floating in a suitable clear glass bowl or brandy/wine glass. Stem must not touch the bottom of the glass container.

**Class 16b:** Single small rose only floating in a suitable clear glass bowl or brandy/wine glass. Stem must not touch the bottom of the glass container

### **SEEDLING AND BEGINNERS**

Open to all exhibitors who have not been awarded an ARS certificate or trophy in a rose show. Included in this class is roses that were grown by either Dr. John Pottschmidt or Jay Bosse and have not been introduced into commerce and hence has no commercially sanctioned name (e.g., Dream Come True is not allowed). Entry tags required.

**Class 17:** Any single stem rose exhibit single bloom or spray.

### **MOST FRAGRANT**

**Class 18: Most Fragrant** – To be judged by all judges using the ARS Fragrance Judging Guidelines. ARS Certificate

### **PHOTO DISPLAY**

This is NOT an ARS sanctioned class but a trial exhibit to further encourage the growing interest in rose photography. The photos will be judged(s) by local amateur photographers with significant experience in photographing roses. All results are final. Certificates of merit and ribbons will be awarded.

### **RULES**

- 1) Single picture of any rose to be taken from exhibitors' garden or any outdoor grown rose. They should be 5" x 7" and no larger than 8" x 10". Mounted using a backing board of art board or foam board and matted (the art board that frames the picture). Matt board color is at the exhibitor's discretion.
- 2) Exhibitors may enter no more than 2 photographs in class.
- 3) Exhibitor must fill out the entry tag and add name and contact information on the back of the matting (not visible to judges) to assist in returning the photo at the end of the show.
- 4) All photos entered must not have been entered in a previous photographic competition and preferably using roses from 2023.

**Class 19:** Any single bloom **Photo** with subject emphasis on the exhibition stage bloom.

**Class 20:** Any single spray **Photo** with 2 or more blooms with subject emphasis on the spray blooms.

### **Best of Show:**

To be judged by all judges based on ARS Best of Show Judging Guidelines.



## Division II Arrangements

(This is **Not** an ARS sanctioned arrangement show.)

### **Fashion and Flowers....."Dreamstate"**

*A ROSE theme to reflect our heritage and places of interest in this wonderful city we call home.*



The bouquet represents the collective love we feel for our past colleagues.

## Rules and Regulations

1. All arrangements must have a rose society tag filled out showing the entrant's name and phone number. The class and arrangement name must be on the tag.
2. Please remember this is a show open to the public. The Greater Cincinnati Rose Association or Ault Park are not responsible for lost or stolen items. So please monitor your things.
3. All arrangements should be in place on the display tables in the Arrangement room by **11:00 AM**. Likewise, all arrangements should be removed by **4:00**.
4. The use of flags, religious symbols or political items are not allowed.
5. It is hoped that entrants can find own grown specimens for their arrangements. Store bought roses are acceptable but not preferred. **Own grown** roses will be given precedence in judging. Please indicate on your entry card: store bought (**SB**) or own grown (**OG**).
6. All results judged by the official judge(s) listed in this schedule are final and no appeal process will be allowed.
7. The use of backdrops is encouraged. Simple cardboard foldouts are available at Michaels stores. Volunteers will help you place your arrangements. We hope to have enough space to show each arrangement to its best advantage.
8. Artificial elements are allowed in your arrangement but more of a background and not a feature.

## Awards

- A 1st, 2nd and 3rd place will be awarded in each class.
- One arrangement out of all the entries in the adult classes will be awarded as Most Creative and one will be awarded Best in Show. These will be 2 different arrangements.
- Arrangements without roses may be considered for the Most Creative Award, but are not eligible for Best in Show.
- Youth classes will be awarded as above (1st, 2nd, 3rd) with an additional award for Best Youth arrangement award.

When you are ready to place your entry, monitors will be available to help. Please be sure to fill out the front of the entry card with Division number and Class number. The back of the card should have your name and phone number to help resolve property issues after the show is over.

# Division II Arrangements

## **Fashion and Flowers....."Dreamstate"**

The colors, beauty, and patterns of flowers have been used to inspire fashion designers for centuries. Today you have an opportunity to experiment and reinvent your style. *A moment of creative exploration!!!*

### **Traditional Arrangements**

Class 1: We're Wild About Flowers



Here's a print with all the exuberance of the season. Play with shades and create a mass, multicolored arrangement in a solid colored, non-glass container. Include roses in your design. Arrangement should not exceed 18" in height (lip of container to highest tip of arrangement) and 24" in width.

## Class 2: Lines in Play



Pay homage to strong lines and contrasting colors. Design a traditional tall line mass arrangement that includes roses and foliage in your design. Sticks or branches are to be featured as the line components.

## Class 3: The French floral flair



French fashion is known as classy, elegant, and effortless. From the baroque grandeur of Louis XIV to Coco Chanel and Dior, they have excited the world with stunning, masterful designs. Pick out a picture from a magazine featuring a French fashion designer and interpret this fashion runway design in flowers. Please include the picture with your design. The arrangement should not exceed 18 inches in height, width, and length.

## Class 4: Always in White

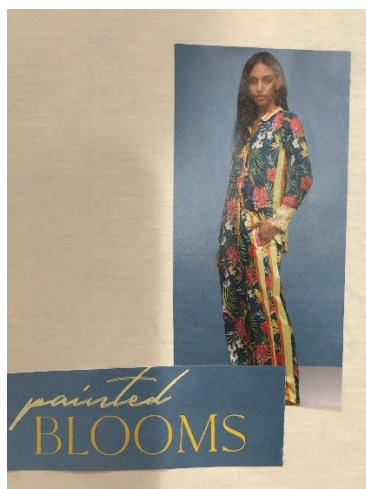
Anything but Basic!!!



The latest in classic white fashion highlights details and showcases design elements. Design a mass arrangement using all white flowers with textural components and foliage. Roses may be used exclusively or used in combination with other white flowers. The design should not exceed 10" in height or width.

## East- Asian Style Arrangements

### Class 5: Painted Blooms



Modern Asian fashion has a loose and flowy fit often inspired by the hip-hop movement. Create an Ikebana style arrangement in a low container

with a kenzan (pronged frog) to secure the materials. Use 3 flowers of 3 different heights placed to produce a visually balanced effect and add “movement” to the arrangement. The three flowers represent sky, man, and earth. Minimal foliage should be used.

### Class 6: Into the Calm



Butterflies in fashion design are said to mimic Psyche, the Greek goddess of the soul, because of their effortless beauty. Use the colorful beauty of a butterfly as an inspiration for your design. Create an Asian Free Style arrangement to symbolize the butterfly. Free Style means any type of informal design of any size, shape, or form.

## Modern Arrangements

### Class 7: A Case for Color!!

An array of colors creates a bold and vibrant look. Design a tall arrangement with geometric details using roses and seasonal flowers, with some elements high and some low.



### Class 8: Print Spotlight



Tropical fashions are bright and cheery; drawn mostly from natural elements such as the sea, sky, and vegetation (plants, fruits, flowers etc.) Design a modern arrangement in a solid, bright container that incorporates

one of the following tropical flowers along with roses and greenery.  
Orchids, protea, ginger or anthurium.

### **Miniature Arrangement**

Class 9: The Sweet Smell of Flowers



Flowers symbolize beauty and release nice scents into the air. Roses, lavender, and jasmine are frequently used in perfume, cosmetics, and aromatherapy. Create an arrangement in a perfume bottle with miniature roses and fragrant foliage (for example eucalyptus, herbs etc).



## Youth Class

Class 11: Children 10 and Under.

Smile!!!



Flowers and fashion tend to brighten up the place and put a smile on people's faces. In a mason jar create a bright, cheerful arrangement that will make all the people at Ault in Bloom smile!!! (Adults are allowed to help the child create the arrangement although it should be mainly the child's work)

Class 12: Children 11 -18. Flowers and fashion tend to brighten up the place and put a smile on people's faces. In a mason jar create a bright, cheerful arrangement that will make all the people at Ault in Bloom smile!!! Be sure to write Youth clearly and place in the youth division area.

Class 13: Children 10 and Under.

Magical and Unique like You:



In a container of your choice, not to exceed 5 inches in diameter and 6 inches tall, create an arrangement to depict the current imaginative fashion trend using shades of green and pink. Roses must be the focal flower of this floral piece. (Adults are allowed to help the child create the arrangement although it should be mainly the child's work)

Class 14: Children 11 -18.

In a container of your choice, not to exceed 5 inches in diameter and 6 inches tall, create an arrangement to depict the current imaginative fashion trend using shades of green and pink. Roses must be the focal flower of this floral piece.